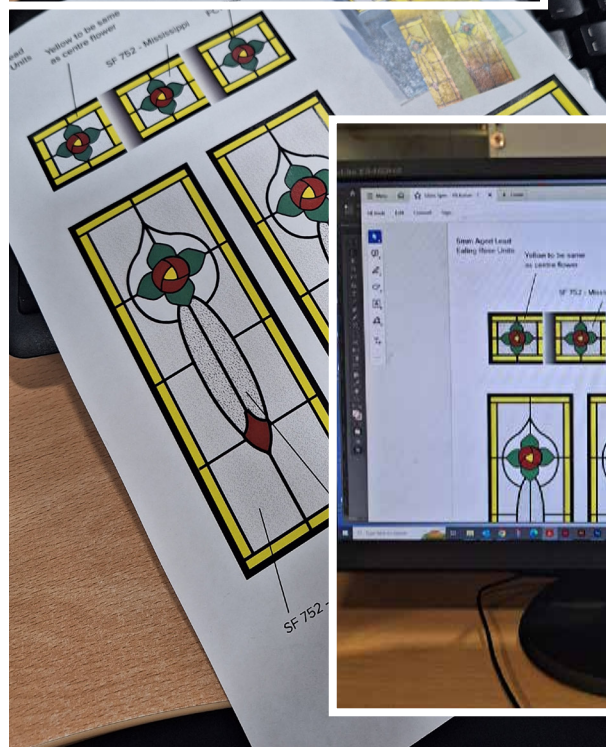


the **PERIOD DOOR** collection

Stunning doorsets designed to complement
the authentic styling of the home



from idea to reality



When designing this collection of doors, many hours were spent researching each era of building styles. Once the designs were decided the fabrication process was put in place to combine mechanical joints, welding plus the use of astragal bars to create the overall effect.

With many authentic features required to replicate a true timber door, it was down to the ironmongers for inspiration, settling on traditional styled handles, knockers and door knobs. The introduction of a slam shut lock also provides the option to not have a handle similar to traditional rim latches. This all culminates into a collection of doors that will confidently grace the front of any building.

bespoke door designs!

Customer requests for alternative door styles, replication of existing glass designs or to produce a door that is more modern in look has seen our portfolio increase; if you have a door to replace and its not in our brochure - just ask!

why buy a period door?

- Door designs to suit all property types
- Bespoke designs to customer's choice
- High Security locking system
- Energy efficient - U Values are better than standard composite doors
- Unlimited glazing options to create individuality
- Shaped frames
- Traditional styled door furniture includes finger pulls, door knockers and centre pull knobs
- Smart Tech options available
- 17 door colours (incl White) to choose from with matching frame



your door inspiration



the **Georgian 1**
 Colour: Schwarzbraun
 Glass: Sandblasted with Clear Text



the **Georgian 2**
 Colour: Pearl Grey
 Glass: Diamond Bevels



the **Georgian 4**
 Colour: Schwarzbraun
 Glass: CW11*



the **Victorian**
 Colour: Chartwell Green
 Glass: CW01* with Diamond Bevel Toplight



the **Victorian**
 Colour: Steel Blue
 Glass: CW18*

*Glass designs and codes are shown further on in this brochure



the **Victorian 2**
 Colour: Schwarzbraun
 Glass: CW13*



the **Victorian 2**
 Colour: Elephant Grey
 Glass: CW22*



the **Edwardian**
 Colour: Ruby Red
 Glass: CW16*



the **Edwardian**
 Colour: Schwarzbraun
 Glass: CW19*



the **Edwardian**
 Colour: Slate Grey
 Glass: CW03*



bespoke door design - customer request



the **Art Deco**
 Colour: Schwarzbraun
 Glass: Sandblasted with Art Deco Numerals



the **Art Deco**
 Colour: Schwarzbraun
 Glass: CW21*



the **1930s**
 Colour: Irish Oak
 Glass: Clear with Astragal Bar



the **1930s 2**
 Colour: White
 Glass: CW14*



the **1930s**
 Colour: Irish Oak
 Glass: CW15*

our period doors

Our Period Door Collection began with a selection of designs that emulate the features of properties from the 1700 - 1900s.

This timeless collection of doors replicate the true timber door used in properties from five historical eras throughout this 300 year period. We have taken our inspiration from the Georgian, Victorian and Edwardian architectural styles, as well as being influenced by door designs found on properties with an Art Deco appearance and common home styles from the 1930s.

These uPVC doors rival any traditionally designed composite door and are perfect replacements for the wooden doors found on older properties.



one step at a time?

Choosing a door can be as simple as perusing this brochure, picking the door from the gallery that is grabbing your attention.

Or

You can take it one step at a time to get the door of your dreams:-

- What door style suits the property?
- What colour door do you want?
- Do you want coloured glass, or just obscure glass? Do you have an idea of glazing that isn't shown in this brochure?
- What about door furniture, do you want traditional ironmongery or just a pad handle?
- Do you want a door that is more modern? Choose flat panels and contemporary styled hardware to change the look of a door style.
- Do you have a door style that isn't in this brochure? Contact us to see if it's possible to manufacture exactly what you need.

security is important

With security top of every homeowners list, our Period Doors are fitted with the highest level 3* plus cylinder available on the market as standard.

What stands between your family and an intruder?
Your Door!



An alarm system will tell you when someone is in your home. Your **Ultion door lock** stops them getting in!

It is reported that 76% of intruders go through the front door and not through the windows; it takes 9 seconds to snap a standard door cylinder and enter the home.

Securing your doors with the Ultion 3* Plus kite marked, Sold Secure Diamond lock defends your home from all known attack methods.

For that extra peace of mind each door cylinder comes with a £2,000 Guarantee.

You can also customise your key. Why not opt for a key fob that lights up in the dark, or one that is coloured to your liking. For the more tech savvy, Ultion also provide a key tracking service that works with Apple Find My Phone app, so you will never lose your front door key again.



the
GEORGIAN

THE GEORGIAN door is a grand, panelled door found on properties built between 1720 and 1820. A classic style influenced by Roman architecture and consisting of six panels, these doors would be typically found sat between two columns with a decorative fanlight above.



our **top picks** for the Georgian doors



Traditional Door Knobs, Premium Doctor Knockers and Etched Glass

Georgian Door Styles:



Georgian



Georgian 1



Georgian 2



Georgian 3



Georgian 4

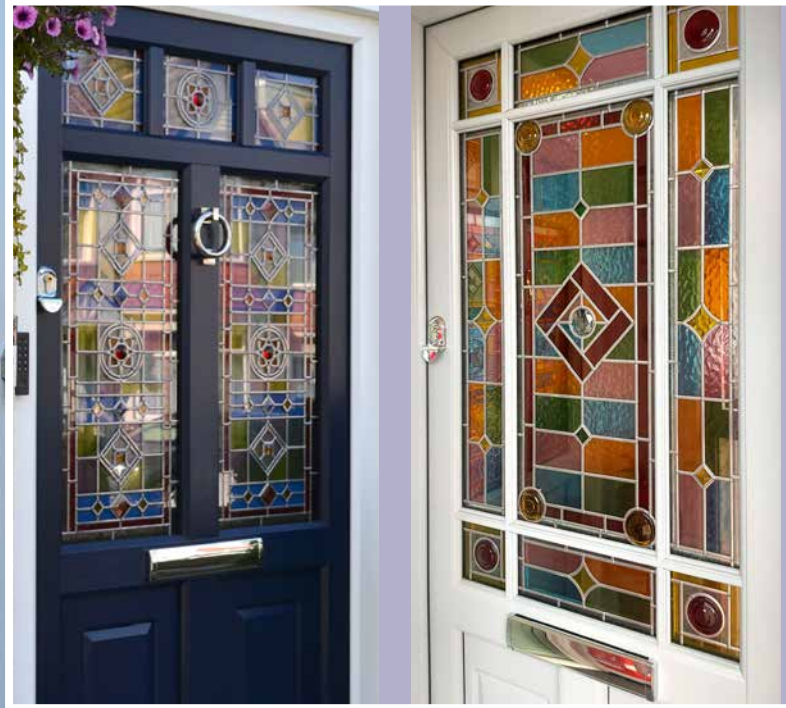
(design influences by properties built 1720-1820)

See our Glass page for more glazing ideas



the
VICTORIAN

THE VICTORIAN door is a perfect replacement for the mock gothic styling of doors from the 1830-1901 era. The elaborate coloured designs and leadwork of the glazing units create the ornate glass effect found on a typical Victorian door.



our **top picks** for the Victorian doors



Traditional Ring Pull Knocker, Finger Pull (no lever handle required) and Coloured Jewelled Glass

Victorian Door Styles:



(design influences by properties built 1830-1901)

See our Glass page for more glazing ideas



Victorian

Victorian 2

the
EDWARDIAN

THE EDWARDIAN door is a replica design from properties built in 1901-1918. Not quite as lavish as the Victorian, this panelled door is finished with a lead or bevelled window design to accentuate the appearance of this style of house.



our **top picks** for the Edwardian doors



Edgeless door furniture by Sweet; Knocker and Numerals in Rose Gold. Shaped glazing for top and side units.

Edwardian Door Styles:



Edwardian

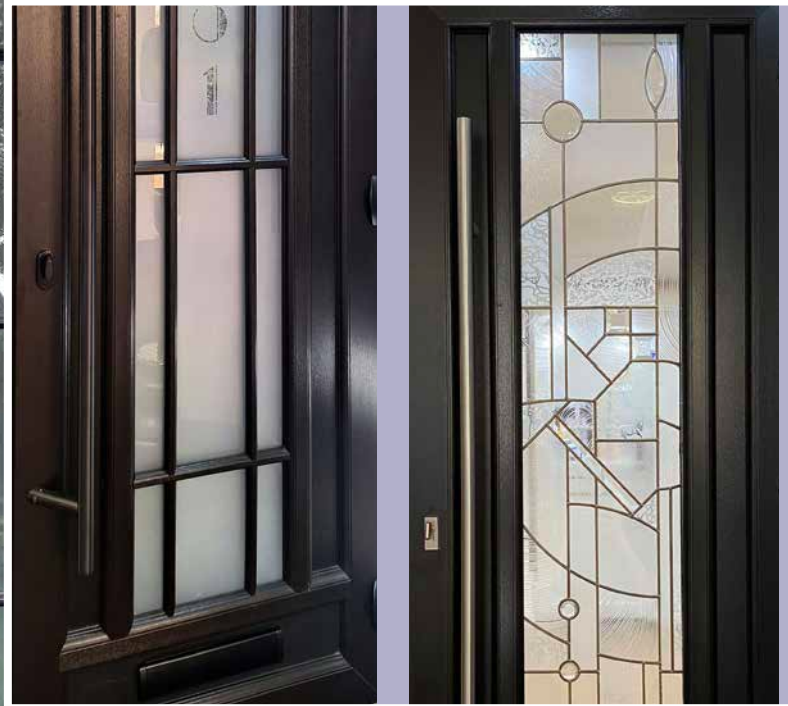
(design influences by properties built 1901-1918)

See our Glass page for more glazing ideas



the
ART DECO

THE ART DECO door has been designed to replicate the streamlined, symmetrical appearance of doors found on properties built between 1925 and 1939. A simple, modern effect of parallel straight lines and geometric designs create stunning doors that would definitely not look out of place on a house built with an Art Deco or contemporary edge.



our **top picks** for the Art Deco doors



Black Pull Bar, Black Premium Letterplate and Sandblasted Glass Unit with Clear Art Deco Font

Art Deco Door Styles:



Art Deco

(design influences by properties built 1925-1939)

See our **Glass** page for more glazing ideas



the
1930s

THE 1930S door is based on the half timber and mixed red brick/pebbledash design of properties built in the 1930s. Typically an oak door with iron fittings, we have designed and produced this door with both modern and contemporary glazed options that would be the perfect replacement for homes built in this period.



our **top picks** for the 1930s doors



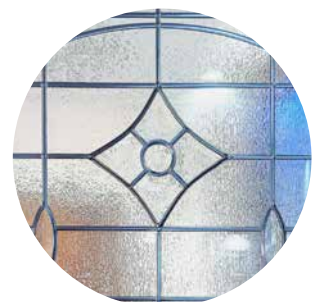
Coastal Hardware - Ring pull and Door Knob.
Bespoke Glass design for glazed unit.

1930s Door Styles:



(design influences by properties built in the 1930s)

See our Glass page for more glazing ideas



1930s

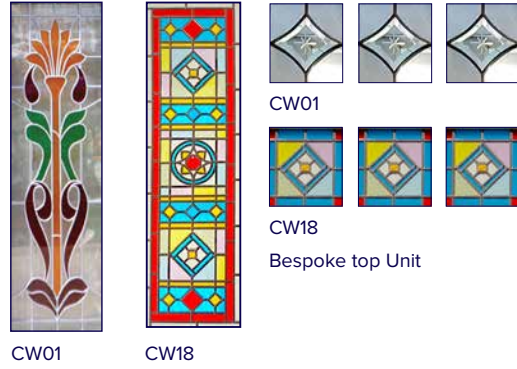
1930s 2

time to be decorative



Our glass designs can be anything from standard industry designs to bespoke customer requests. If we can re-create the look you want and our glass shop can provide the unit, we can supply a door the fits all your requirements.

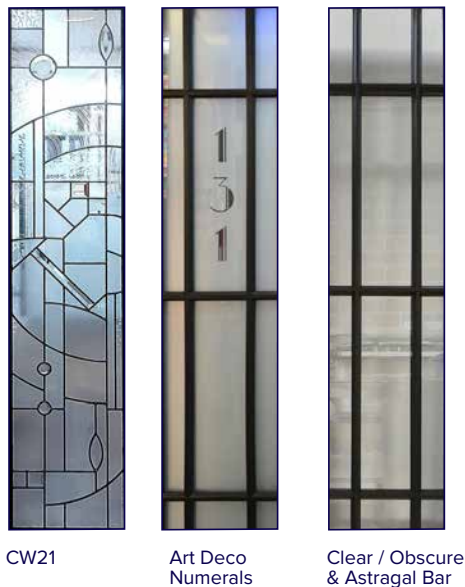
Victorian glass examples:



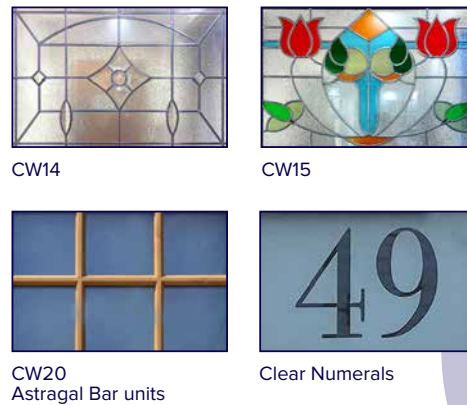
Edwardian glass examples:



Art Deco glass examples:



1930s glass examples:



just ask!

The glass shown on this page is just some of the examples available. If there is a particular design of glass required, just ask!



dress your door

With many authentic features required to replicate a true timber door, it was down to the ironmongers for inspiration, settling on traditional styled handles, knockers and door knobs. The introduction of a slam shut lock also provides the option to not have a handle on the external face.

traditional styles:



Lever/Lever & Lever/Pad
White, Chrome, Black, Gold, Satin, Enduro Steel, Grey-(L/L only)



Monkey Tail & Cottage Slimline Lever/Lever
Black, Pewter Patina



Newbury & Reeded Lever/Lever
Aged Brass, Aged Bronze, Polished Bronze, Polished Chrome, Polished Nickel



Avon Slimline Lever/Lever
Aged Brass, Aged Bronze, Black, Pewter Patina, Polished Bronze, Polished Chrome



Hybrid Hinge
Gold, Black, Chrome, Satin, White, Brown, Tan, Cream, Chartwell Green, Anthracite Grey, Beige Brown



Doctor Knocker & Pony Tail Knocker
Gold, Chrome, Satin, Enduro Steel



Premium Doctor Knocker
Chrome, Gold, Satin, Black



Bull Ring Knocker
White, Pewter



Stainless Steel Ring Knocker
Polished Stainless Steel, Stainless Steel, Polished Brass, Satin Black



Slimline & Standard Urn Knocker with & without spy hole
Gold, Chrome, Black, White, Satin, Enduro Steel



Stainless Steel Letterplate
Gold, Chrome, Black, White, Brushed



Pull Knob
White, Satin



Stainless Steel Pull Knob
Polished Stainless Steel, Stainless Steel, Polished Brass, Satin Black



Stainless Steel Escutcheon
Brushed



Oval Escutcheon
Gold, Chrome, Brushed, Satin, Black, White



Finger Pull Escutcheon
Black, Chrome, Gold, Rose Gold, Stainless Steel, Anthracite Grey, White



Spyhole Viewer
Gold, Chrome, Black, White, Satin

edgeless, curved styles:

20 Year Guarantee



Lever/Lever & Lever/Pad
Black, Chrome, Gold, Rose Gold, Stainless Steel, Anthracite Grey, White



Lock Lock 2* Lever/Lever
Black, Chrome, Gold, Rose Gold, Stainless Steel, Anthracite Grey, White



Knocker 2 Part with & without Spyhole
Black, Chrome, Gold, Rose Gold, Stainless Steel, Anthracite Grey, White



Urn Knocker with & without Spyhole
Black, Chrome, Gold, Rose Gold, Stainless Steel, Anthracite Grey, White



Escutcheon & Finger Pull
Black, Chrome, Gold, Rose Gold, Stainless Steel, Anthracite Grey, White

0123456789abc

Numerals

Black, Chrome, Gold, Rose Gold, Stainless Steel, Anthracite Grey

contemporary styles:



Offset Rectangular 'T' Bar Pull Handle
Stainless Steel



Offset Round 'T' Bar Pull Handle
Stainless Steel, Black



Mitre Lever
Polished Stainless Steel



T Bar Lever
Stainless Steel



Wing Lever
Satin Stainless Steel



Square Door Knob
Stainless Steel



Round Door Knob
Satin Stainless Steel, Black

A period door doesn't need to be traditional looking. If a modern design is required, simply tweak your specification, add contemporary furniture and choose a non-grained finish such as Anthracite Grey Smooth.

smart tech:

The **Ultion Nuki** smart technology allows you to control your front door from your phone, keypad or keyfob.

Your smart phone becomes your key*, opening your door automatically when you arrive home and locking it as you leave.

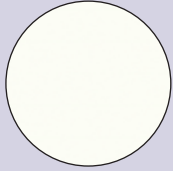
There is also the option for keypad entry, by fingerprint or by pre-set code, or simply press the button on the programmed keyfobs available with your Nuki locks.

*Keys are still available.

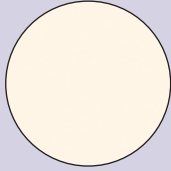


our colours

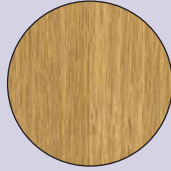
All colours available include matching frames.



WHITE ASH



CLOTTED CREAM



IRISH OAK



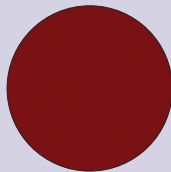
GOLDEN OAK



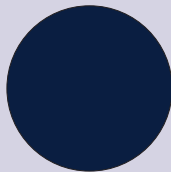
MAHOGANY



ROSEWOOD



RUBY RED



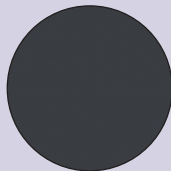
STEEL BLUE



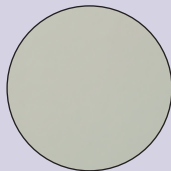
SCHWARZ-BRAUN



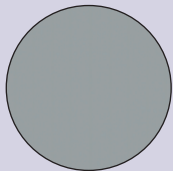
ANTHRACITE GREY (GRAINED)



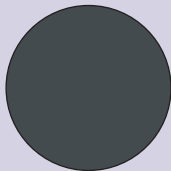
ANTHRACITE GREY (SMOOTH)*



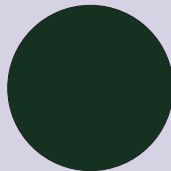
PEARL GREY



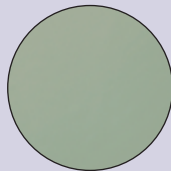
ELEPHANT GREY



SLATE GREY (GRAINED)



RACING GREEN



CHARTWELL GREEN

*colour only available with flat panels

