

vista

the newsletter from Climatec Windows

Now in our 23rd
Year of successfully
supplying quality
windows, doors and
conservatories

Winter 2016

IN THIS ISSUE

DOORS, DOORS, DOORS!

See inside for the collection of premium doors, now available from Climatec Windows and Alu-tec UK:

- Period doors
- Aluminium doors
- Timber Composite doors.

- PLUS**
- New Flush Sash Windows
 - New Machining Centre
 - Transport News



The
Children's
Society

Helping to make a small difference

When you pick up your Christmas post over the next few weeks you will notice that there's something missing from Climatec.

This year, instead of paying out for Christmas cards we have sent a donation to The Children's Society to help fund a local Christmas event for children and young people who are affected by parental issues such as drug/alcohol problems, mental health concerns and offending. An often hidden problem that sees the children become young carers who are desperately trying to hold their family unit together.

The Hidden Harm team at Chelmsford's Children Society are holding a Christingle event linked with Chelmsford Cathedral to give these children an afternoon away from their responsibilities, a chance to have fun, learn a little about the meaning of Christmas, enjoy a Christmas dinner and (the best bit) receive a present!

Climatec are more than happy to help bring a little Christmas magic to these young people and we are certain you won't miss our Christmas card this year.



CHRISTMAS SHUTDOWN

Another year has passed and as we head towards 2017, we would like to wish you all a very merry Christmas and prosperous new year.

For your information Climatec will be closing our factories and offices on Wednesday 21st December and will re-open on Tuesday 3rd January 2017 at 8.30am.

Thank you for your continued custom and support throughout this year and we look forward to working with you again in 2017.

T: 01702 613733 F: 01702 613367
www.climatec-windows.co.uk

lu-tec climatec
windows limited



Premium Doors from Climatec Windows

NOW AVAILABLE

Its all about doors, doors, doors at Climatec Windows as 2016 comes to a close, and as we step in 2017 we are pleased to announce our large collection of 'Premium Door's' especially for you.

Following the launch of our PVCu Period Door range in the Autumn issue of Vista, we have now added a further two premium door collections to our portfolio of products.

So whether its a more exclusive PVCu door to match an Art Deco house; a secure timber composite or even a stylish aluminium door, Climatec are now able to accommodate your every requirement!

masterdor[®] craftsman PREMIUM COMPOSITE DOORS

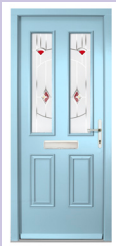
The Masterdor Craftsman door is a premium composite door of the finest quality that will look great on any property. Each door combines authentic joinery skills with innovative technology, all wrapped up in a silky smooth painted finish that creates a highly desirable and outstandingly durable door.

With 13 traditional designs to choose from and 9 contemporary designs, there is the right style for every home.

TRADITIONAL



THE ARDEN



THE ASHDOWN



THE CHARNWOOD



THE DEAN



THE EPING



THE GALLOWAY



THE HATFIELD



THE HIGHGATE



THE MARSTON



THE NEWSTEAD



THE PARKHURST



THE SHACKLEFORD



THE SHERWOOD

- No yearly maintenance
- No warping and twisting
- No draughts caused by shrinkage
- No rotting and deterioration
- No weather penetration
- No unstable timbers
- No flaking and crazing of paint finish
- No sticking or catching

CONTEMPORARY



THE ALBURY



THE DALBY



THE FOXLEY



THE GLENGARRY



THE HAMPTON



THE MERCIA



THE ROCKINGHAM



THE RUFORD



THE WHITTINGHAM

More on the Masterdor Craftsman continued overleaf.../

Premium Doors from Climatec Windows



The Masterdor Craftsman Premium Composite door comes in 21 beautiful lifestyle colours and matched with a selection of stylish door hardware that complements the door range perfectly. Whether your chosen style is a classic panelled door or a more contemporary design with a grooved finish, we have the ideal hardware to suit.

wax seal	summer coral	lemon curd	pitted olive	bottle
chartwell	cambridge blue	devonshire	savile row	mulberry
merlot	bourville	mannequin	potter's wheel	french sage
vellum	chalk cliff	dove	smokestack	anthracite
				whitby jet

**masterdor[®]
craftsman**

<p>STANDARD HARDWARE COLLECTION</p> <p>ProLinea Lever Handle Victorian Urn Knocker Slimline Victorian Urn Pony Tail Knocker Modern Oval Knocker Pro-style Letterbox</p>	<p>PREMIUM HERITAGE HARDWARE COLLECTION</p> <p>Pear Door Knocker Avon Lever Handle Cottage Lever Handle Shakespeare Knocker Loop door Knocker Octagonal Door Pull Letterbox</p>	<p>CONTEMPORARY BRUSHED STAINLESS STEEL HARDWARE COLLECTION</p> <p>V Handle Bow Handle Bar Handles Ingof Door Knocker Pony Tail Knocker Centre Door Pull Letterbox</p>
--	--	---

A sample of furniture from each hardware collection is shown. For full details visit our website to download the Masterdor Craftsman Brochure

The Masterdor Craftsman Premium Composite Doors are available from Climatec with immediate effect. For a brochure and order forms, please visit our website www.climatec-windows.co.uk.

PERIOD DOOR COLLECTION - Premium PVC Doors



Following the introduction of our exclusive Period Door Collection in our last issue of Vista we have now begun manufacture of the Georgian, Victorian, Edwardian, Art Deco and the 1930s doors.

The five doors are available in a selection of colours and a choice of hardware to complement each period style and a slam shut door lock completes the authenticity of the door.

The order form for these doors can now be found on our website and a brochure will be available in the New Year.

- PVCu doors bespoke to original property type
- Variety of glass designs available
- Fitted with Sigma Hybrid Hinges
- MACO ZTA slam shut door locks for authenticity
- Choice of doctor knockers, finger pulls and centre knobs complete the traditional look



Premium Doors from Climatec Windows

NOW AVAILABLE



CONTEMPORARY ALUMINIUM DOORS

Climatec's aluminium company, Alu-tec UK also have a range of premium doors to add to their collection of residential, bifold, sliding and commercial doors. A thermally efficient range of doors that ideally suits the residential and light commercial market.

This collection comprises of a selection of 40 aluminium panels in a variety of designs that will complement any contemporary styled property, or the perfect solution for that homeowner who is looking for something different and unique.

The doors are manufactured to provide high performance solutions for today's specification demands. Utilising thermal break technology, they deliver superior thermal performance and great looks through an aesthetic slimline 58mm and 70mm profile.

You can find our Contemporary Aluminium Door brochure on our website.



ABER 5



ALBERG 1



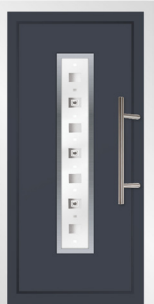
ARTBURY 3



ASPEN 1



AUTRANS 2



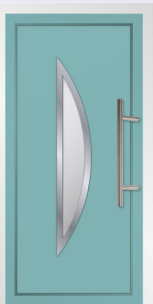
AVORIAZ 1



BORMIO 3



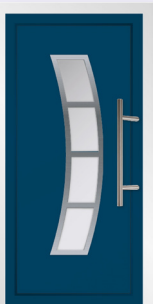
CARONA 2



CERVINIO 1



CHAMONIX 3



COLOGNE 4



COURCHEVEL 3



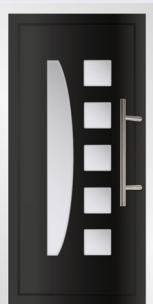
ELORN 1



IGMAN 1



JAVORNIK 3



LB 6



LEYSIN 3



LIVIGNO 1



LURISIA 4



LUZERN 3



MANALI 6



MATIGNY 2



MERIBEL 4



MERIZINE 3

More contemporary aluminium designs continued overleaf.../

Premium Doors from Climatec Windows



CONTEMPORARY ALUMINIUM DOORS



MOLVINO 1



MORZINE 1



NEOSLOPE 3



PECA 3



PORTE 1



RISOUL 5



SESTRIERE 3



SUMMIT 6



TAVASCAN 2



TRIBERG 1



VALMOREL 2



VALNORD 2



VERBIER 3



VEYSONNAZ 3

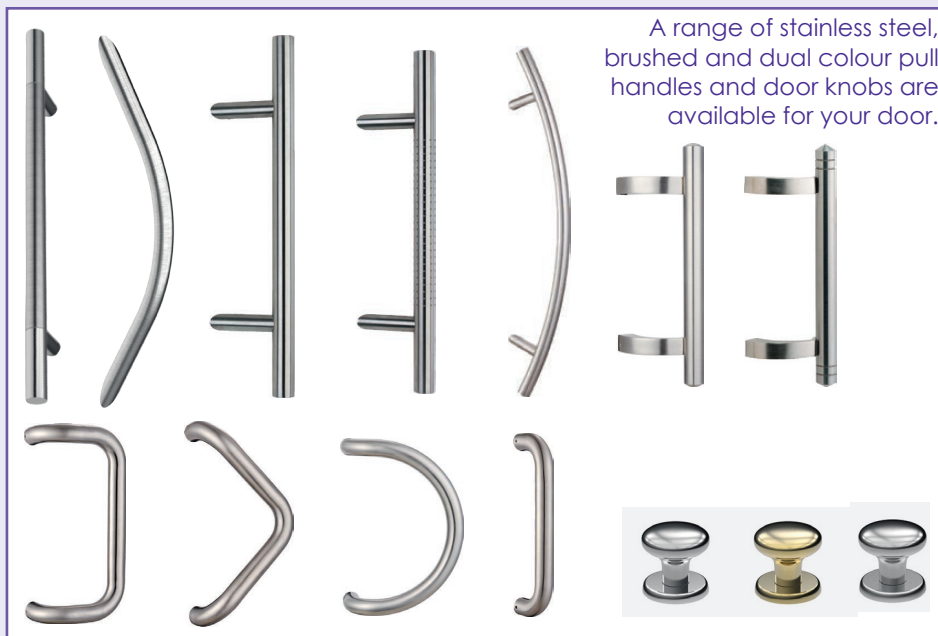


VEYSONNAZ 5



ZERMATT 3

- 40 Thermally efficient panel designs
- 3* Security cylinder
- Winkhaus AV2 slam shut lock or key wind option available
- Choice of pull handles offered
- Standard colours: White (RAL 9010), Black (RAL 9005), Anthracite Grey (RAL 7016)
- Powder coated RAL colours available as special option.



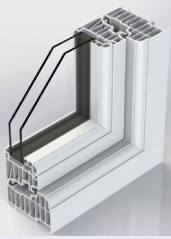
A range of stainless steel, brushed and dual colour pull handles and door knobs are available for your door.



NEW PRODUCT FOR 2017

Flush Sash Windows

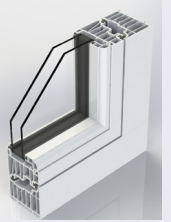
Climatec Windows will be adding 3 new flush sashes to their collection of PVCu casement windows in 2017. Along with the high quality premium R9 window from the Residence collection, we will also manufacture the R7 and the Deceuninck Heritage flush sash system.



The R9 is a high end product with 100mm deep frame which is available fully mechanically jointed to give the authentic "timber look" appearance. The window will be supplied fully glazed using the glass bonding method.



As an alternative look Climatec will also be able to supply a mechanically constructed outer frame with a welded sash, the joints being pinched to a tight 0.5mm so that they are almost invisible.



The R7, with its narrower 75mm deep frame, is a more suitable replacement for existing standard timber windows. These flush sashes will be available fully mechanically jointed to give the authentic "timber look" appearance and will also be supplied fully glazed using the glass bonding method.



As an alternative, we will also be able to supply with a mechanically constructed outer frame but with a welded sash, or with a fully welded outerframe and sash - the mullion/transoms will always be mechanically jointed.



As well as producing the Residence Collection, we will also be fabricating the new Deceuninck Heritage Flush Sash System. This is based on Deceuninck's 2800 sculptured suite with a 70mm deep frame and will be available with a fully welded outerframe and sash plus mechanically jointed mullion/transoms. The weld joints will be pinched tight to 0.5mm so they

deceuninck

are almost invisible and there will be a version for the commercial market with standard welded and grooved joints. An option for a mechanically jointed sash frame for the "timber look" appearance will also be available.

KEEP ON TRUCKING



As part of Climatec's 2016/ 2017 investment programme, we have added two new Lorries to our fleet of vehicles to improve our logistics.

The new Isuzu N75's are 7.5 tonne trucks with larger capacity for delivery volumes compared to previous Climatec lorries. Both are fitted with tail lifts to assist with loading and unloading of some of our bigger and heavier products.

There are plans to add two further vehicles by April 2017. This will allow the older lorries currently in service to be taken off the road and provide us with a more economical fleet of vehicles. And with a larger fleet of vehicles Climatec can expand on their current delivery routes.



NEW SAWING AND MACHINE CENTRE



Climatec took ownership this week of a new Stuga Autoflow 2 Sawing and Machining Centre. This will be the first of two invested in for our PVCu factory; the second is expected by March 2017.



The Stuga Autoflow 2 is a fully automated sawing and machining centre using the latest technology enabling Climatec to provide a sleeker, more productive output for our casement windows, tilt and turns, vertical sliders and doors.

The 13.5 metre long machine has an unlimited number of prep capabilities including drainage, espags, trickle vents, 'V' notches and door preps as well as providing an effective saw cutting facility.

Other advantages of investing in the Stuga Autoflow 2 is the online software support and the excellent service engineering structure. On board cameras in the machine allow operations to be viewed by the engineer's in the Stuga factory to enable them to resolve problems quickly.

